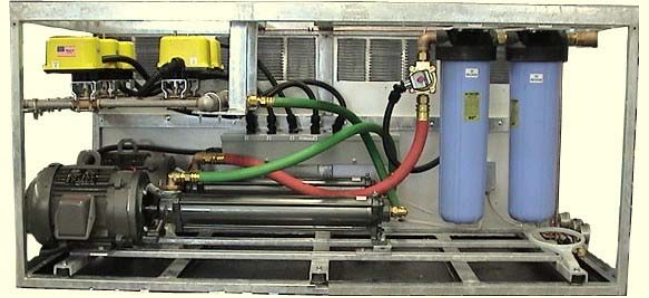
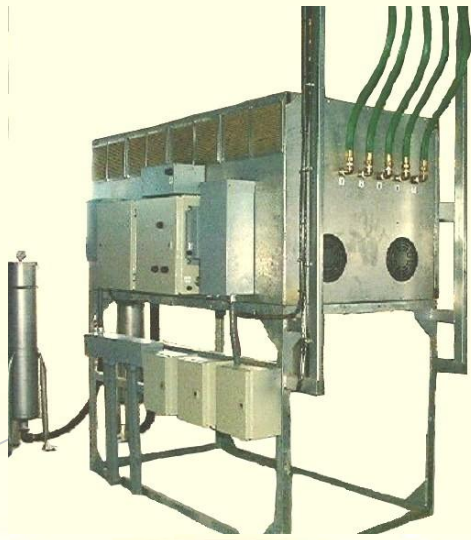


Increased milk production, increased reproduction, decreased cull rate
better body condition, increased profits



control module

description

- Control module
- 67 in wide x 32 in tall x 32 in deep
1.70 m wide x 0.81 m tall x 0.81 m deep
- 300 to 700 lbs (136.36 to 318.18 kg)

options

- networking capabilities give you complete control of all pens from your office desk
- wireless network capabilities give you complete control of all pens from anywhere on your dairy
- large display board showing wet and dry bulb temperature
- ground or overhead mounting
- 230/460/380 volt @ 50/60 hertz

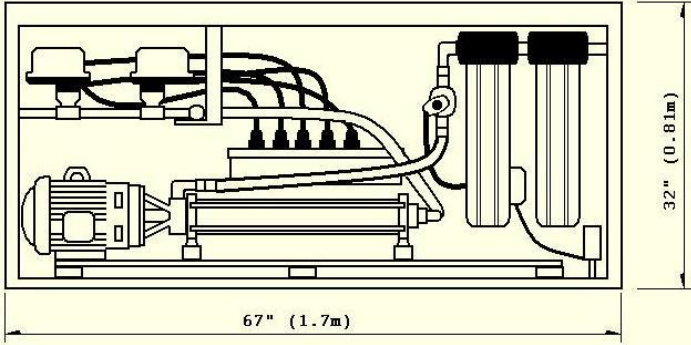
features/benefits

- Fully automated, customizable configuration gives you complete control of all system parameters, including on/off times and temperatures, water flow and curtain operation
- supports multiple coolers or fans in line (actual number depends on module setup)
- automatic computer controls vary the water injection, achieving maximum convective cooling and maximum water efficiency levels by monitoring real-time temperature and humidity trends
- internal system sensors and safety protocol ensures pumps, motors, and curtains are protected during storms, energy spikes, high temperatures and low water pressures
- "demo mode" cycles the system through each system stage allowing you to pin-point and repair any problem quickly
- windows® based koolnet 3® graphic user interface

Korralkool Inc 3355 N Reseda #1 Mesa, AZ 85215
www.korralkool.com t: 480.807.0290 f: 480.807.0248



features/benefits continued



- “hour-interrupt” switch allows you manual control of shutting off or starting up the system from inside the pen, perfect for suspending the system while cows are sent out for milking
- output water pressure of 200-400 psi and properly sized CPVC high pressure lines ensures all coolers in a pen cool as effectively as the first cooler in line
- two stage water filtration system reduces nozzle clogging
- all plumbing components are brass or stainless steel to provide supreme durability
- galvalum® casing and weather-tight electrical boxes protect module and circuitry from corrosion

module comparison matrix

| | required input | output gpm | output pressure | no. of stages | no. of pumps | no. of coolers supported |
|-----------|----------------|------------|-----------------|---------------|--------------|--------------------------|
| HML25-15K | 25-40 psi* | 25 | 200-400 | 3 | 1-2 | up to 15 |
| HML50-30K | 25-40 psi* | 50 | 200-400 | 3 | 2 | up to 30 |
| HML75-40K | 25-40 psi* | 75 | 200-400 | 3 | 3 | up to 40 |
| MI25-15K | 25-40 psi* | 25 | 200-400 | 12 | 1-2 | up to 15 |
| MI50-30K | 25-40 psi* | 50 | 200-400 | 12 | 2 | up to 30 |
| MI75-40K | 25-40 psi* | 75 | 200-400 | 12 | 3 | up to 40 |

*25-40 psi at rated flow of the configured system

